

# Artwork Guide for 68mm x 195mm Rectangle

———— PRINTERS TRIM LINE / SHEET SIZE  
- - - - - DIE CUT  
· · · · · IMAGE BLEED LINE

**Austmag** Unit 2, 13 Brennan Way, Belmont WA 6104  
Tel: (08) 9477 5505 Fax: (08) 9477 5506

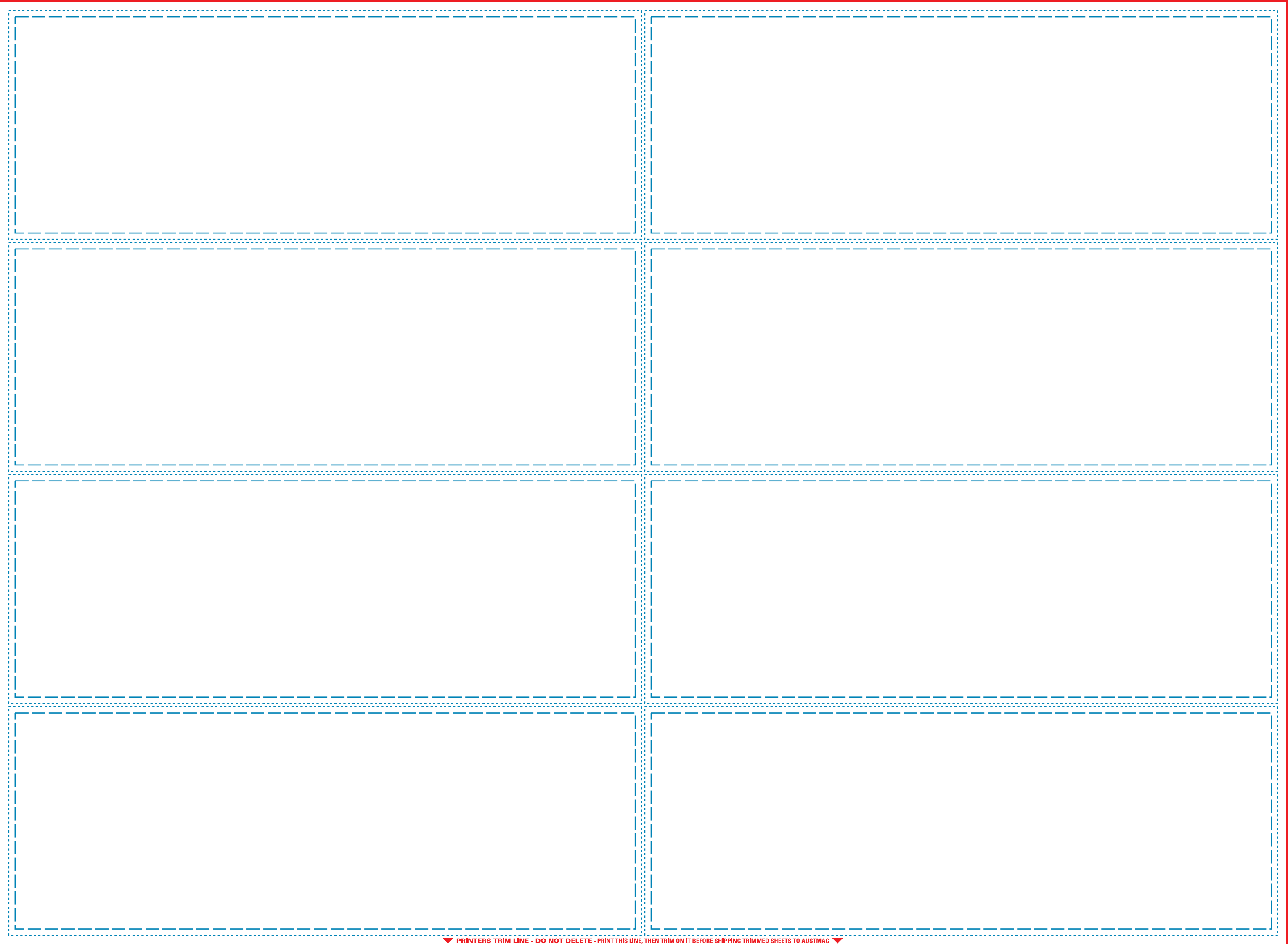
## PRODUCTION GUIDE

**DESIGN**  
Magnetic sheet is flexible so allow for some movement:  
- keep borders and text well away from edges.  
- bleed well into gully.

**PRINTING**  
On 150 -170gsm gloss paper.

**OVERS**  
Registration checks use at least 3 sacrificed sheets:  
- generally allow minimum 5% overs.

**TRIM**  
The sheets need to be trimmed accurately - particularly on the 2 lay edges.  
The die-cutting is spaced exactly from those 2 edges.



▼ PRINTERS TRIM LINE - DO NOT DELETE - PRINT THIS LINE, THEN TRIM ON IT BEFORE SHIPPING TRIMMED SHEETS TO AUSTMAG ▼