

# Artwork Guide for Number '1'

PRINTERS TRIM LINE / SHEET SIZE  
DIE CUT  
IMAGE BLEED LINE



Unit 2, 13 Brennan Way, Belmont WA 6104  
Tel: (08) 9477 5505 Fax: (08) 9477 5506

## PRODUCTION GUIDE

### DESIGN

Magnetic sheet is flexible so allow for some movement:  
- keep borders and text well away from edges.  
- bleed well into gully.

### PRINTING

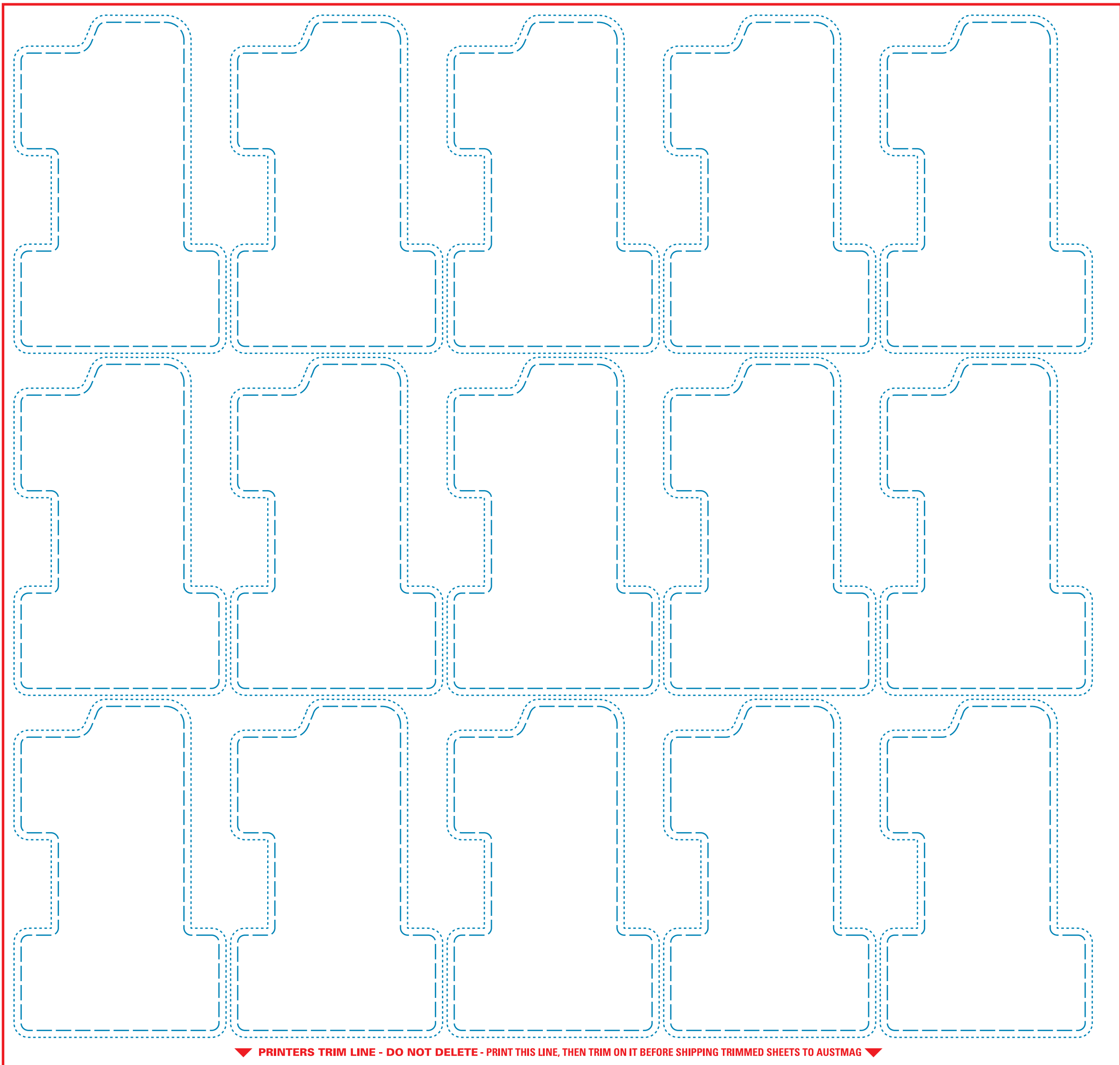
On 150 -170gsm gloss paper.

### OVERS

Registration checks use at least 3 sacrificed sheets:  
- generally allow minimum 5% overs.

### TRIM

The sheets need to be trimmed accurately - particularly on the 2 lay edges.  
The die-cutting is spaced exactly from those 2 edges.



▼ PRINTERS TRIM LINE - DO NOT DELETE - PRINT THIS LINE, THEN TRIM ON IT BEFORE SHIPPING TRIMMED SHEETS TO AUSTMAG ▼